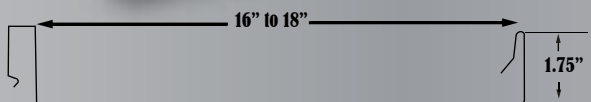
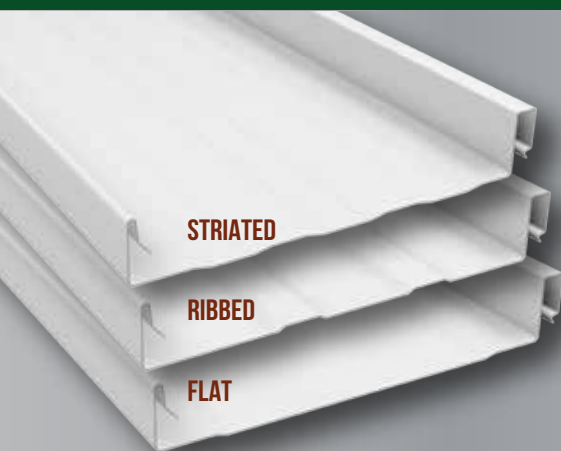
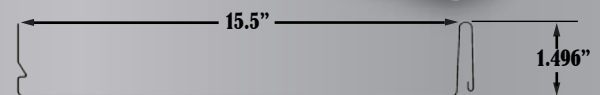
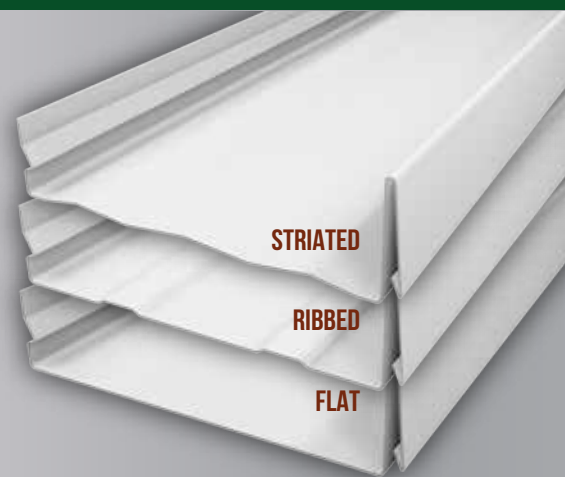


# TRI COUNTY METALS



SS Lok is available in 24 Gauge (18" width)  
and .040" Aluminum (16" width)



SL Lok is available in 24 Gauge and .032 Aluminum

AVAILABLE IN



GALVALUME®

[www.TriCountyMetals.com](http://www.TriCountyMetals.com)

## SS LOK 1 3/4" AND SL-LOK 1 1/2" INSTALLATION MANUAL

# TABLE OF CONTENTS

Important Notice/Safety/Storage/Tools.....	1
Product Information.....	2
Roofing Anatomy/Side Trim .....	3
Measuring Your Roof.....	4
Drip Edge Installation .....	5
W Valley Installation .....	6
Fastening Schedule/Proper Screw Installation .....	7
Squaring Panels.....	8
Transition Flashing Installation .....	9
Endwall Installation.....	10
Sidewall Installation.....	11
Gable Trim Installation .....	12
Ridge Cap Installation.....	13
Roof Boot Installation.....	14
Special Trim Information.....	15
Care and Maintenance.....	16
Policies.....	17
Order Form .....	18



*Make Your Next Roof Your Last!*

## IMPORTANT NOTICE

- This manual is to aid the installer with the installation of the SL-Lok panel. Due to the different complexities of roofs and roofing situations, it is difficult to create a manual that covers every situation that the installer may encounter.
- This manual is to serve as a guideline to properly installing the SL-Lok panel.
- Check with local building codes prior to installing metal roofing.
- Any questions you may have regarding proper installation of the SL-Lok panel should be directed to a Tri County Metals representative.
- Panels in this profile, unless you've ordered a striated version, can show "oil canning" which is a wave-like appearance going up the panels. This can be caused by elastic buckling also known as stress wrinkling in the flat areas of the panels. Although it can be unsightly, this is not a manufacturing defect and is not a means for refusal of product. Tri County Metals highly recommends the use of striations for all standing seam panels and SL-Lok panels.

## TOOLS RECOMMENDED

Variable Speed Drill or Screw Gun, Snips, Magnetic Bit, Extension Ladder, Turbo Shears (we stock these for purchase), Tape Measure, Hand Bending Tools, Chalk Line, String Line, Drill Bits, Tool Belt, and Utility Knife

## SAFETY

- Failure to observe proper roofing safety can result in serious injury or death. Extreme caution should be used at all times when installing metal roofing. The information in this manual is to show the correct placement of the metal roofing parts. It is the responsibility of the erector to perform the placement of these parts in a safe manner. Refer to OSHA guidelines for applicable safety requirements.
- Never walk on a wet metal roof.
- Never walk on an unfastened roof panel.

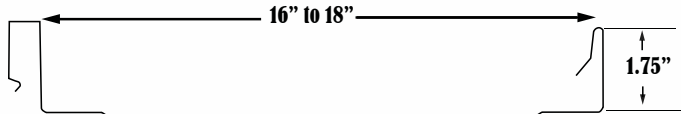
## STORAGE/HANDLING

- **Important:** Moisture trapped between stacked sheets may cause water stains or white rust to form under the paint, which can affect the life and service of the metal.
- If metal is not used immediately, store in a well ventilated dry location.
- Any outdoor storage is at the customer's own risk! If outdoor storage cannot be avoided the likelihood of damage may be reduced by protecting the metal using a canvas or breathable paper.
- Fan sheets lightly at the bottom to allow for air circulation.
- **Keep the sheets off the ground** by using an insulator such as wood.
- **Never cover the metal with plastic** as this will cause condensation to form.



*Make Your Next Roof Your Last!*

# SS-LOK AND SL-LOK PRODUCT INFORMATION



**Applications:** Residential, Light Commercial

**Gauge:** Typically 24 gauge in 18" width and .040 Aluminum in 16" width

**Minimum Slope:** 1/4 / 12 - Tube sealant recommended on pitches below 2 / 12

**Panel Profile:** Varying widths and substrates depending on selection.

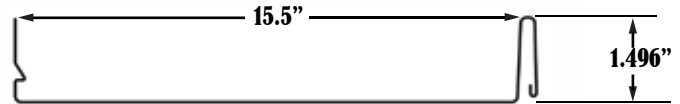
Note: Typically our stock includes 24 ga at 18" width and .040 Aluminum at 16" width"

**Finish:** Mill Finish AZ55 Acrylic Coated Galvalume®; 25 year limited warranty

**TCM exclusive paint systems:**

Max Defender Paint System® 35 / 30 year limited warranty.

Coastal Defender Paint System® 25 year limited warranty.



**Applications:** Residential, Light Commercial

**Gauge:** 24 gauge and .032" Aluminum

**Minimum Slope:** 1/4 / 12 - Tube sealant recommended on pitches below 2 / 12

**Panel Profile:** 15 1/2" net coverage Substrate: Galvalume® steel sheet, conforming to ASTM A792

**Finish:** Mill Finish AZ55 Acrylic Coated Galvalume®; 25 year limited warranty

**TCM exclusive paint systems:**

Max Defender Paint System® 35 / 30 year limited warranty.

Coastal Defender Paint System® 25 year limited warranty.

Minimum Slope shall comply with Florida Building Code, including Sections 1507.4.2, greater than .25/12 with recommending sealant under 2/12

**PLEASE NOTE:** For other installation configurations, please inquire with your salesperson for site-specific accommodations.

## FLORIDA PRODUCT APPROVALS

A current list Florida Product Approvals available on our website.

For the most up-to-date Florida Product Approvals, please visit our website:

[TriCountyMetals.com/florida-product-approvals/](http://TriCountyMetals.com/florida-product-approvals/)

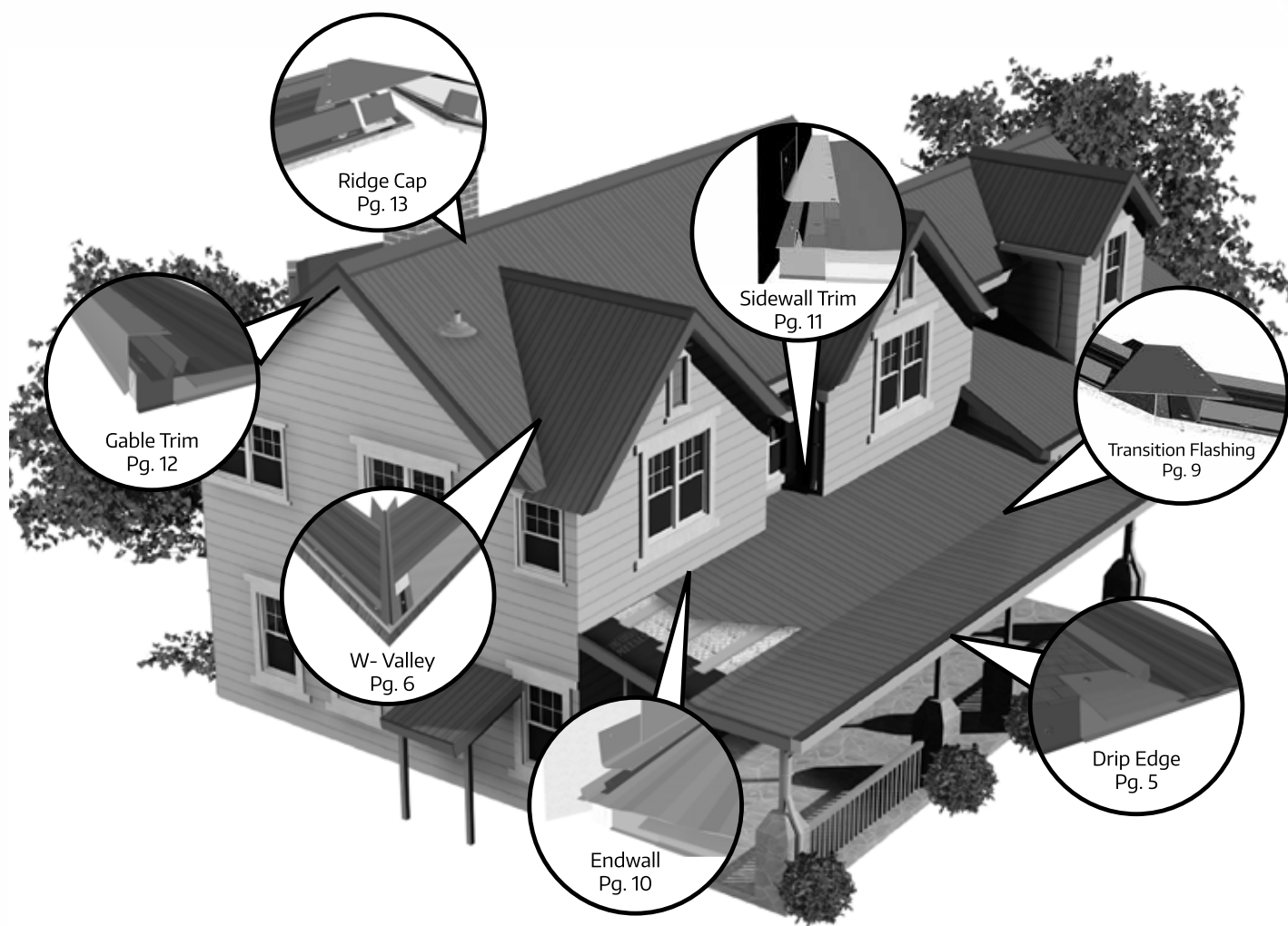


*Make Your Next Roof Your Last!*



# ROOFING ANATOMY

Pg.3



Ridge Cap  
Pg. 13

Sidewall Trim  
Pg. 11

Transition Flashing  
Pg. 9

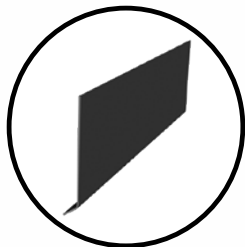
Gable Trim  
Pg. 12

W- Valley  
Pg. 6

Endwall  
Pg. 10

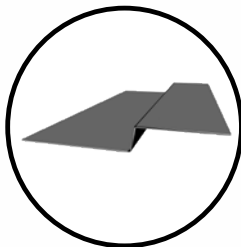
Drip Edge  
Pg. 5

## Eave Cleat



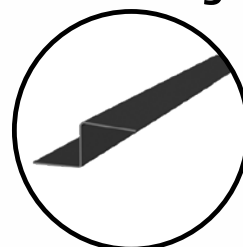
Used to attach drip edge and gable trim to the fascia board.  
(Optional)

## Panel Starter



Used to attach panel edges at valley ends, drip edge and at roof transitions.

## Z Flashing



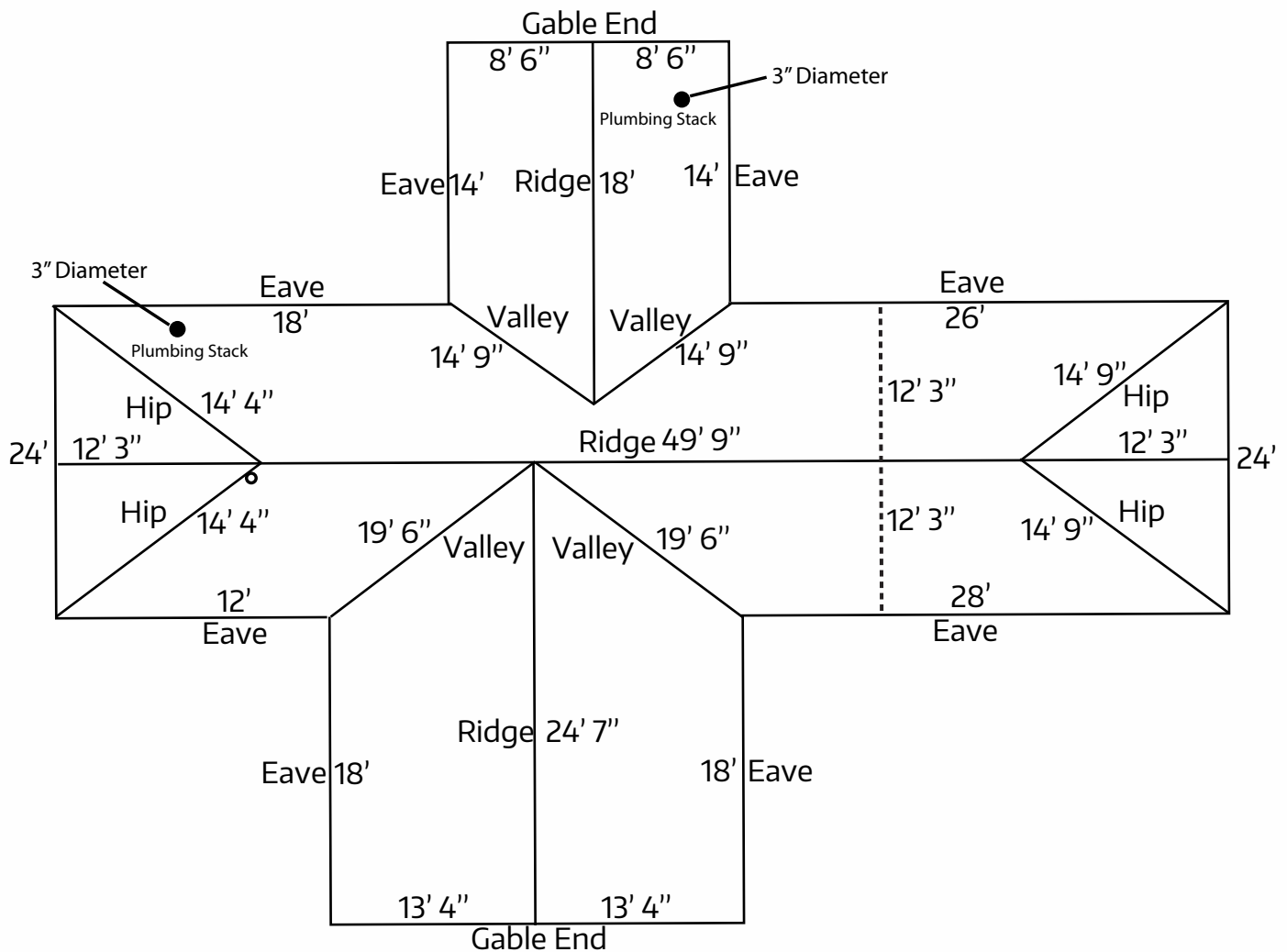
Used to attach the ridge cap, gable trim, sidewall, endwall, and transition flashings to the roof.



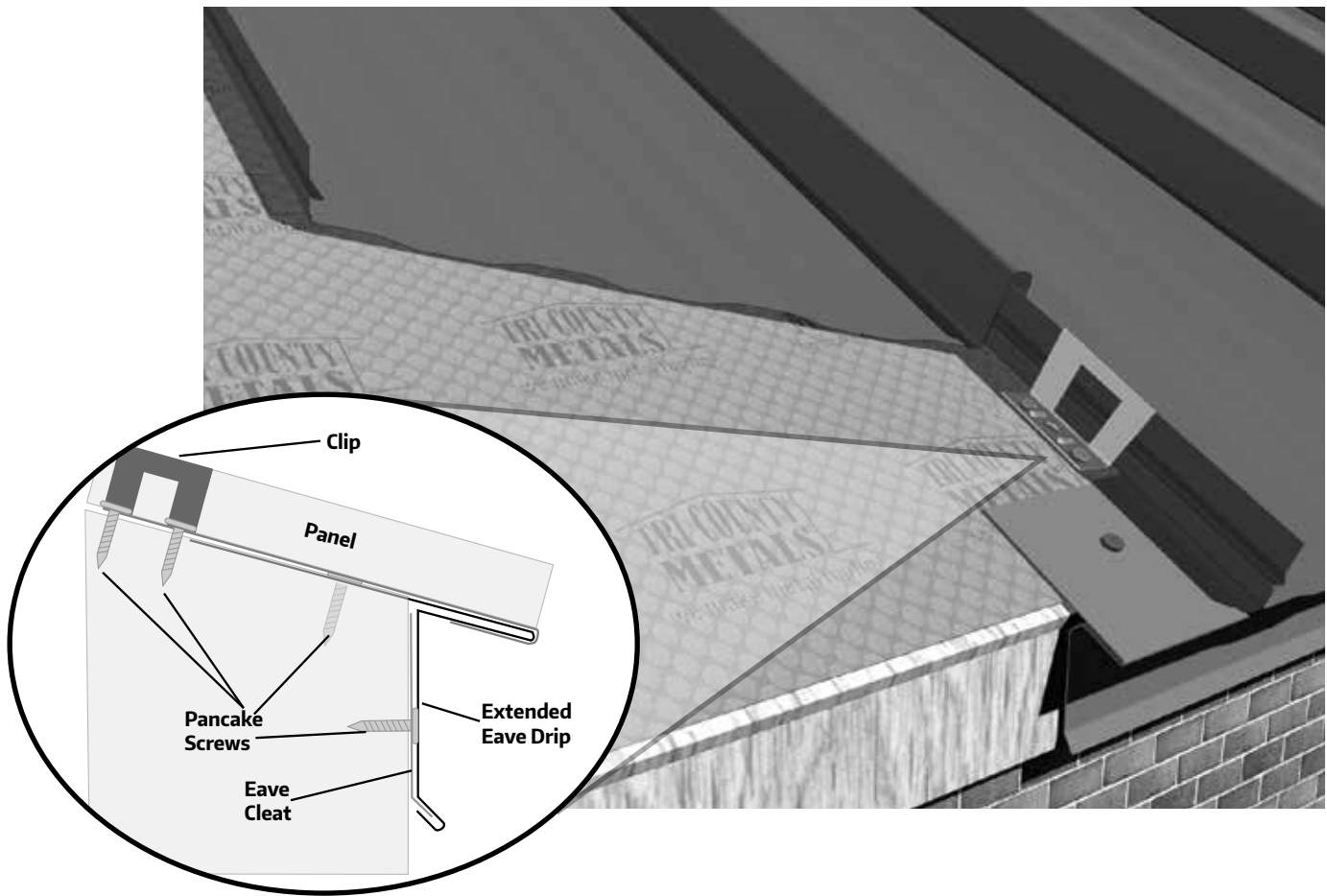
*Make Your Next Roof Your Last!*

# MEASURING YOUR ROOF FOR AN ESTIMATE

- > Start by sketching a birds eye view of your roof. This can be aided by using Google Earth or similar online programs.
- > Identify each part of your roof similar to the drawing below.
- > Once you have drawn your roof and identified each part, measure each line and include it on the drawing.
- > Include on the drawing the location of plumbing stacks (if any) and the diameter of the pipe.



# DRIP EDGE



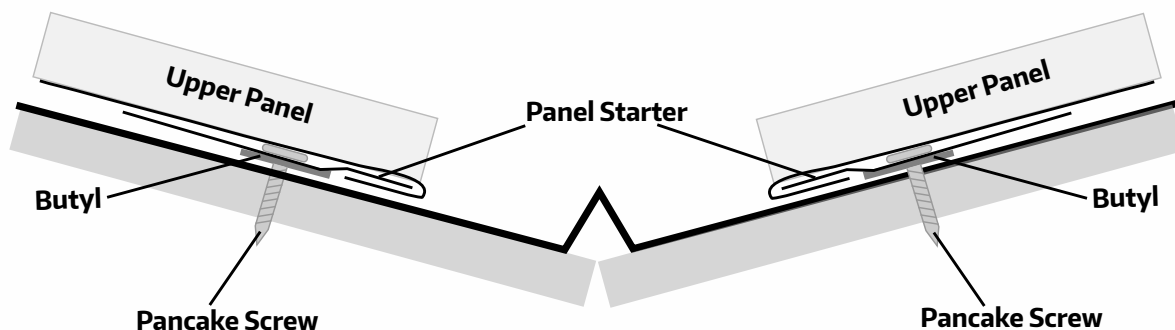
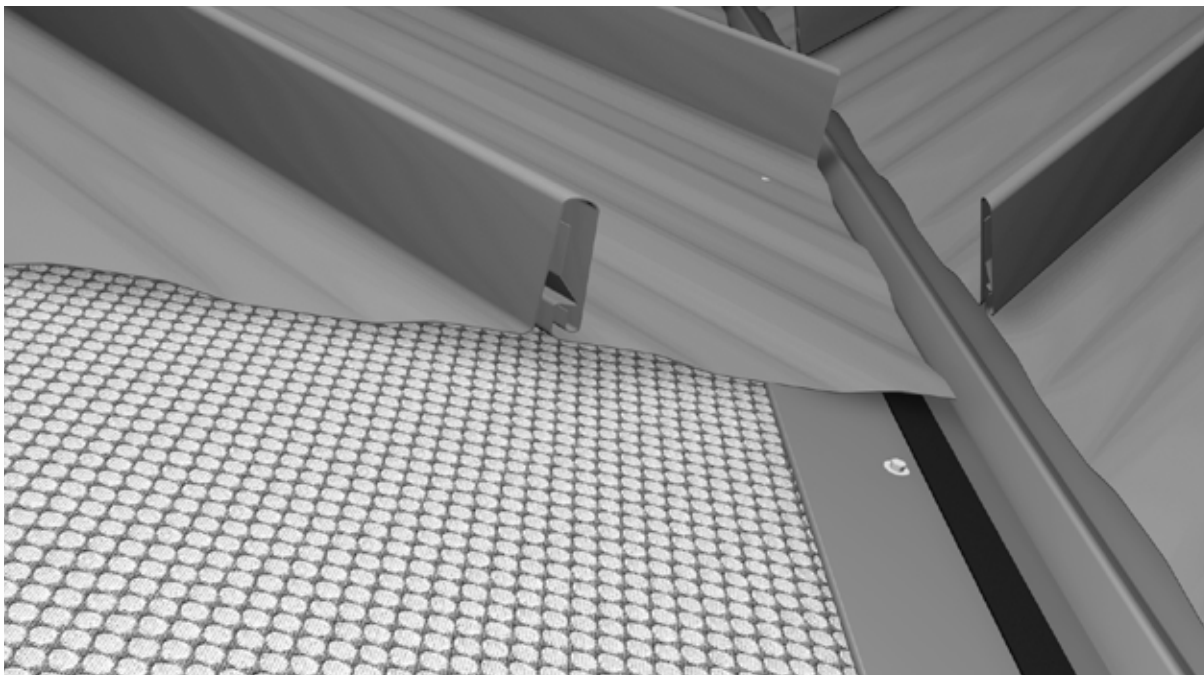
## Notes:

1. Attach eave cleat flashing to fascia board using 1" pancake screws every 4" on-center.. Overlap eave cleat flashing a minimum of 3". (Optional for Non-HVHZ Installs)
2. Attach drip edge flashing to roof deck with 1" pancake screws 4" on-center, while hooking the bottom edge of the eave trim flashing to the bottom edge of the eave cleat flashing. (Optional)
3. Overlap drip edge flashing a minimum of 3".
4. Allow drip edge to run past corner of roof 3" so it can be folded to ensure maximum weather tightness.
5. Attach roofing panel at eave by notching 1" off of each panel rib from the panel edge leaving 1" of panel to be folded over the drip edge flashing.
6. Slide hemmed panel edge over drip edge flashing.
7. Use hand seamers to finish crimping panels over drip edge if using extended eave drip.



*Make Your Next Roof Your Last!*

# W-VALLEY



## Note:

1. Starting at the bottom, fasten W-Valley trim flashing to roof substrate using 1" pancake screws every 24" on center.
2. The valley trim needs to run past the installed drip edge, or cut flush with drip edge.
3. End lap w-valley flashing a minimum of 6 inches. Install Butyl 2" minimum.
3. Cut roofing panels so they stop 3" from the diverter in the center of the W-Valley trim flashing.
4. Apply Butyl the entire length of the w-valley flashing 5" from the center diverter
5. Attach panel starter on top of the Butyl and screw the panel starter down every 24" using 1" pancake screws.
6. Place clips on male rib according to according to most up-to-date Florida Product Approvals, please visit our website: [TriCountyMetals.com/florida-product-approvals/](http://TriCountyMetals.com/florida-product-approvals/).

## RECOMMENDED ACCESSORIES:

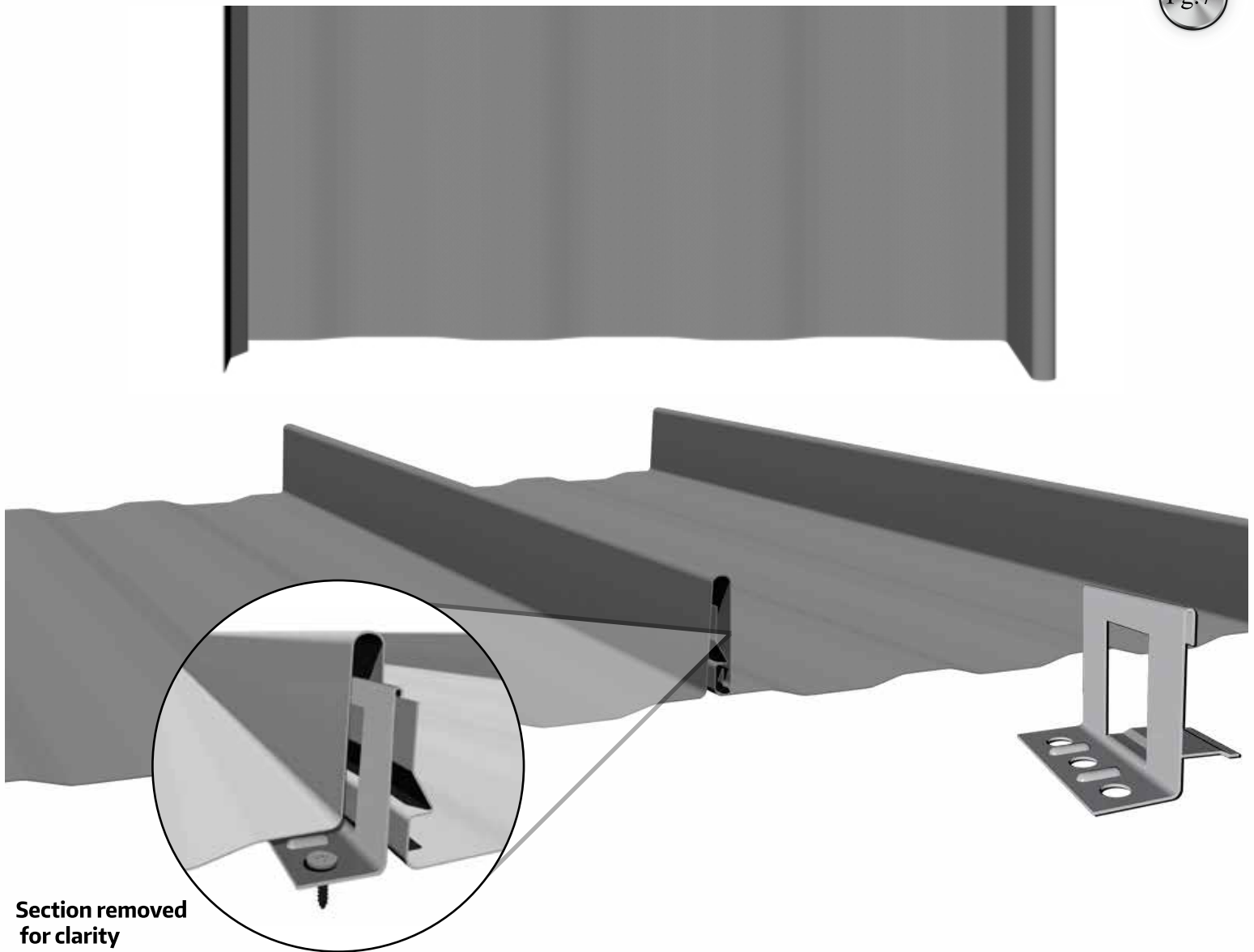
Butyl (1 roll = 50' of coverage)



*Make Your Next Roof Your Last!*

# FASTENING SCHEDULE

Pg. 7



Section removed  
for clarity

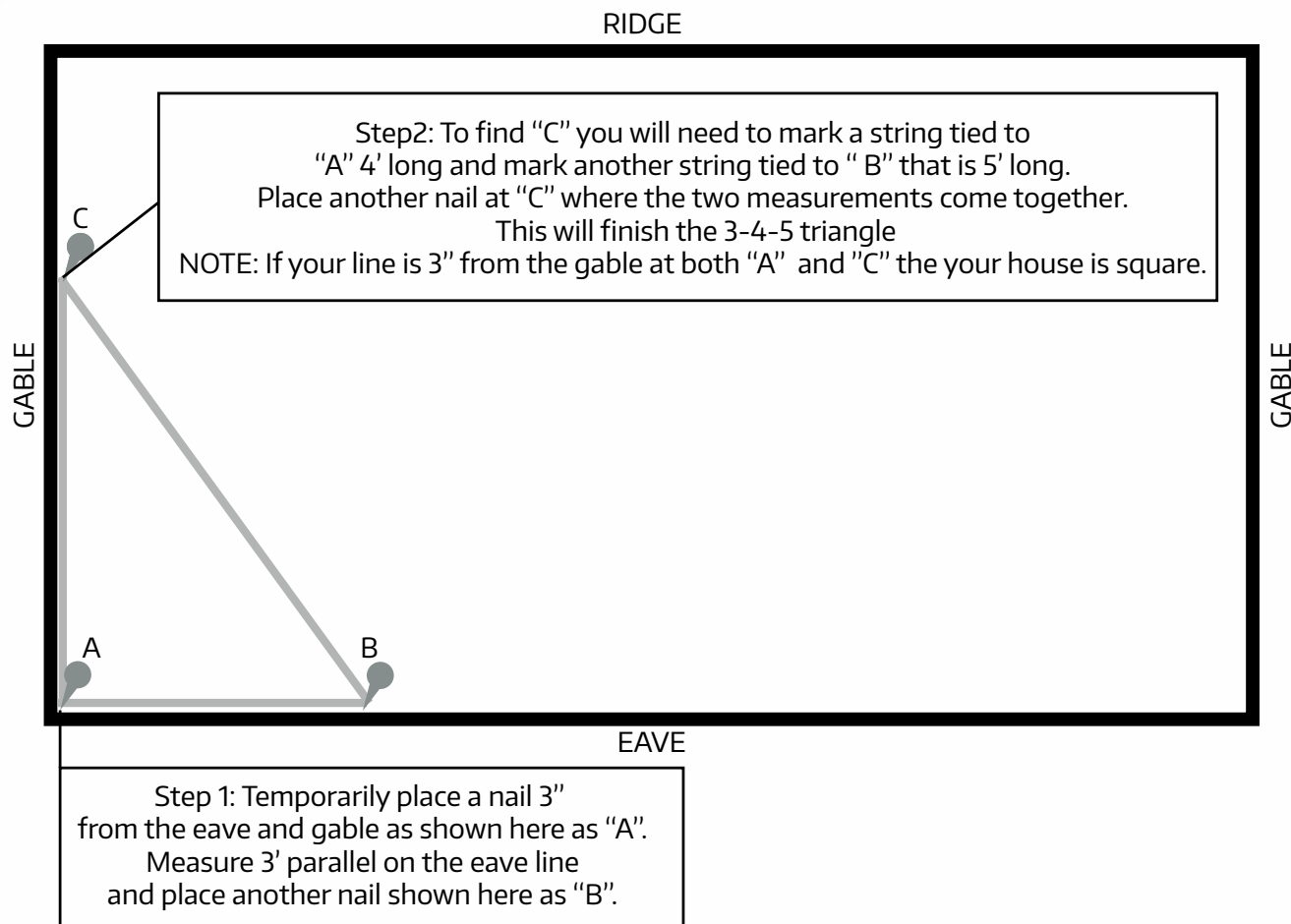
For full details on the fastener type, and spacing, please refer  
to the Florida Product Approvals page on our website  
[TriCountyMetals.com/florida-product-approvals/](http://TriCountyMetals.com/florida-product-approvals/)



*Make Your Next Roof Your Last!*



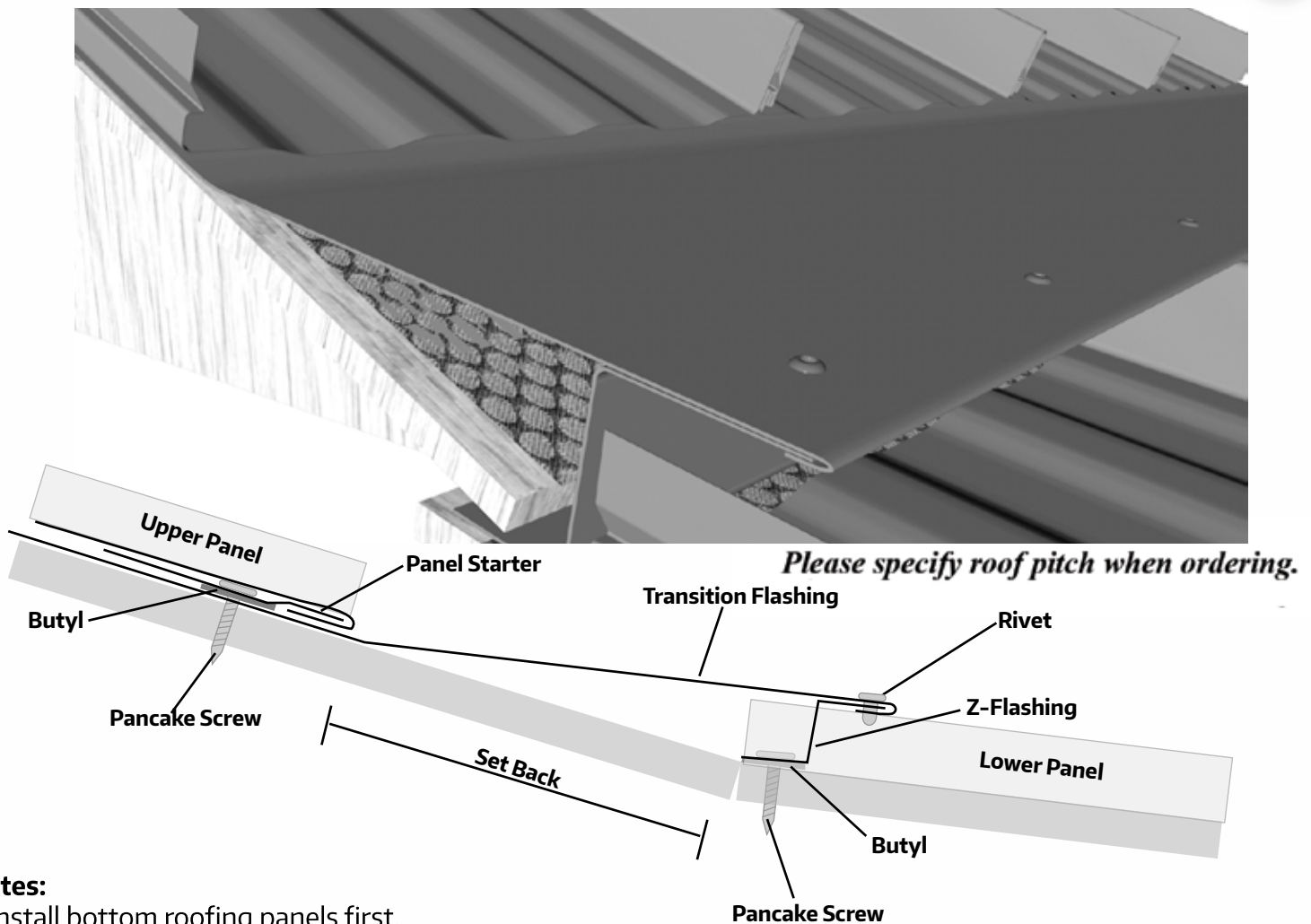
# SQUARING PANELS



The 3-4-5 triangle method will work on a larger scale as well. For example if your roof panels are 16' long then you can multiply the 3-4-5 by 4 so you will be measuring 12-16-20. Just make sure that you multiply all measurements by the same number. The next step will be making a chalk line going from your "point A" to "point C". You will want this line to be as close to the edge of the gable as possible so your first panel will be about an 1/8" from the edge of the roof. You will want to measure 9' 6" from your chalk line at the A and C points and make another chalk line. This will help you as you start installing your panels to make sure they are still square with your eave. It is a good idea to continue this process for the entire project and on both sides of your roof.

# TRANSITION FLASHING

Pg.9



## Notes:

1. Install bottom roofing panels first.
2. Apply Butyl in the flat part of the lower roof panels where the z-flashing is going to be installed.
3. Notch the z-flashing to fit over the panel ribs and install over the Butyl using 1" pancake screws every 4" on-center.
4. Use TCM Approved Sealant to seal openings created between z-flashing and panel ribs.
5. Slide the transition flashing over the installed z-flashing.
6. Secure transition flashing to z-flashing using rivets every 12" on-center.
7. Apply tacky tape to the top side of the transition flashing.
8. Install a panel starter on top of the Butyl using 1" pancake screws every 4" on-center.
9. Slide the hemmed panel over the panel starter and attach the panel to the roof substrate using 1" pancake screws according to screw placement according to most up-to-date Florida Product Approvals, please visit our website: [TriCountyMetals.com/florida-product-approvals/](http://TriCountyMetals.com/florida-product-approvals/) .

## RECOMMENDED ACCESSORIES:

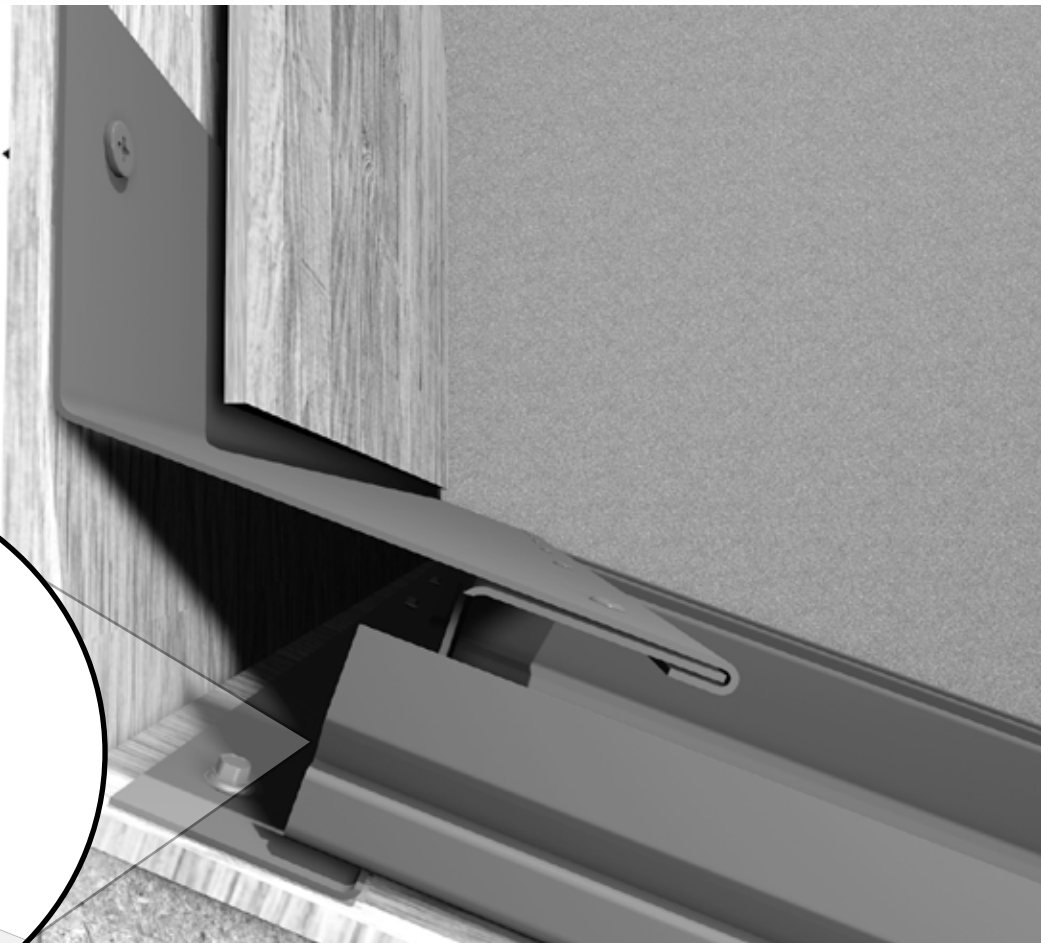
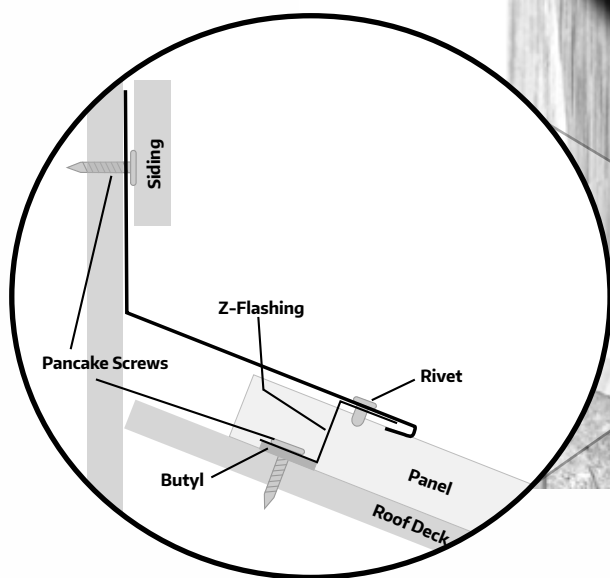
Butyl (1 roll= 50')

TCM Approved Sealant (1 tube = 31 linear feet (1/4" bead)



*Make Your Next Roof Your Last!*

# ENDWALL FLASHING



## Notes:

- 1 Apply Butyl in between the ribs of the panel.
2. #2. Notch Z-flashing to fit over the top of the rib or cut pieces to fit in-between ribs.
3. Fasten z-flashing to panels using 1" pancake screws every 4" on-center.
4. Use TCM Approved Sealant to seal openings created between z-flashing and the panel ribs
5. Slide Endwall flashing over z-flashing
6. Secure endwall flashing to z-flashing using rivets every 12" on-center.
7. Attach endwall flashing to wall
8. Cover endwall flashing with siding or counter-flashing.

## RECOMMENDED ACCESSORIES:

Butyl (1 roll = 50')

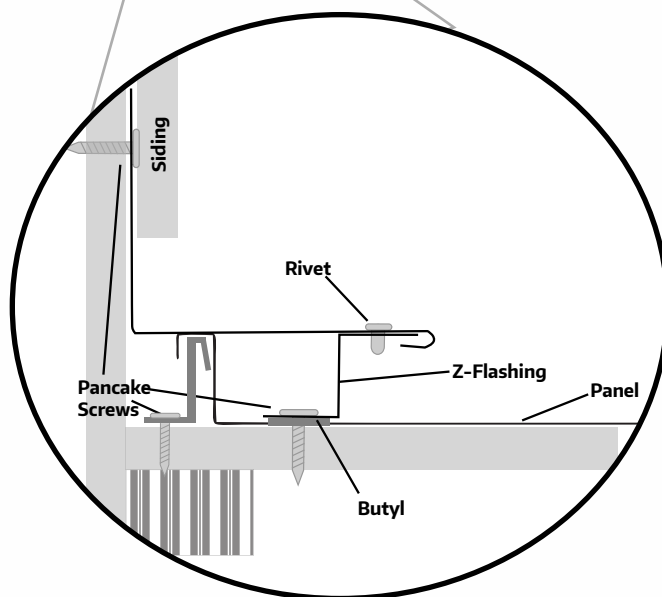
TCM Approved Sealant (1 tube = 31 linear feet (1/4" bead))



*Make Your Next Roof Your Last!*



# SIDEWALL FLASHING



## Notes:

1. Apply Butyl along the panel where the z-flashing is going to be installed.
2. Attach the z-flashing to the panel by using 1" pancake screws every 4".
3. Slide the sidewall flashing over the z-flashing
4. Secure the sidewall flashing to the z-flashing using rivets every 12".
5. Attach the sidewall flashing to the wall
6. Cover the sidewall flashing with siding or counter flashing.

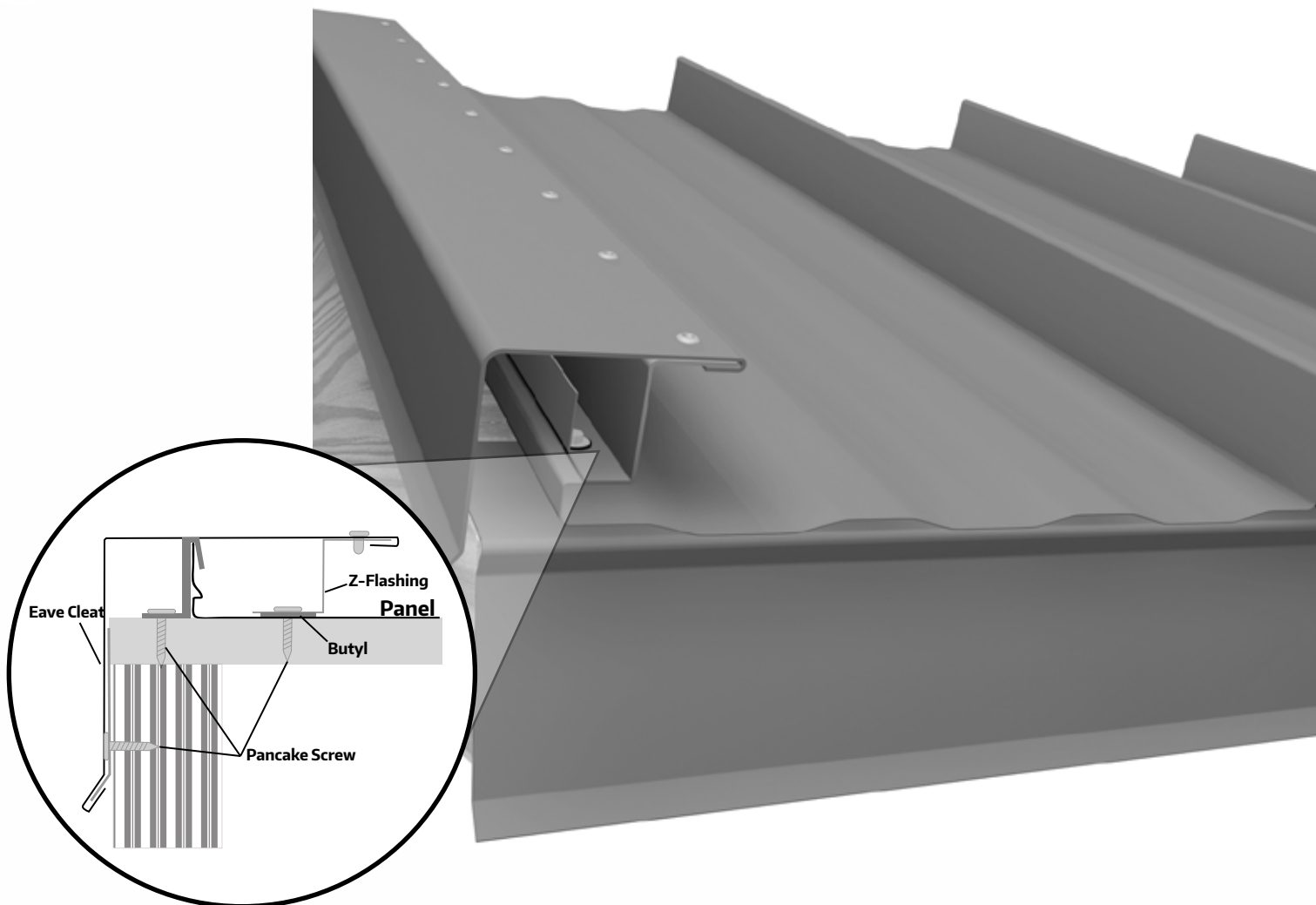
## RECOMMENDED ACCESSORIES:

Butyl (1 roll = 50' of coverage)



*Make Your Next Roof Your Last!*

# GABLE TRIM

**Notes:**

1. Apply Butyl to topside of panel where z-flashing will be installed.
2. If the panel rib is not going to be under the gable trim flashing, the panel will need to be turned up 1" along the gable end.
3. Install z-flashing on top of Butyl and fasten to roof deck using 1" pancake screws every 4".
4. Attach eave cleat to fascia board using 1" pancake screws every 4". (Optional)
5. Slide gable trim flashing over z-flashing and then snap it over the eave cleat. (Optional)
6. Secure gable trim to z-flashing using rivets every 12".

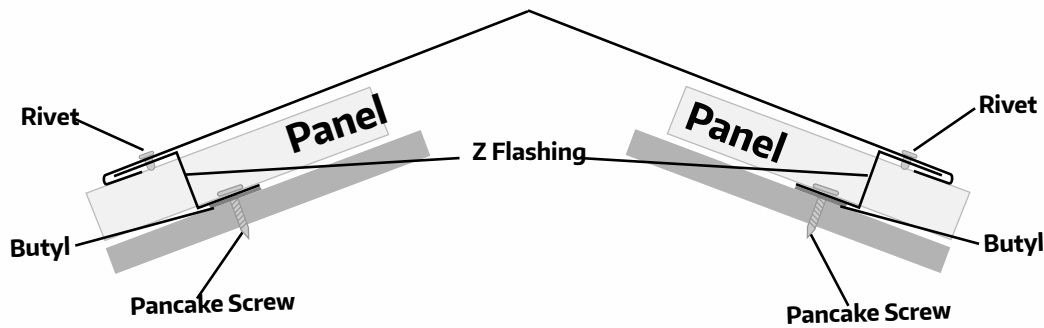
**RECOMMENDED ACCESSORIES**

Butyl (1 roll = 50' of coverage)

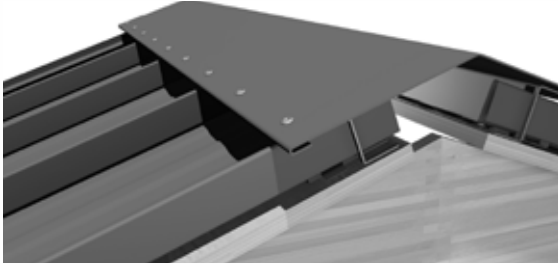


*Make Your Next Roof Your Last!*

# RIDGE CAP



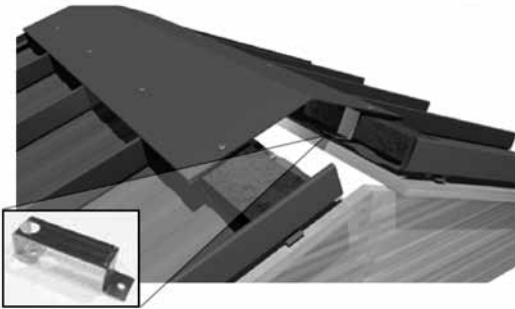
*Please specify roof pitch when ordering.*



Non-Vented Installation

## Non-Vented Installation

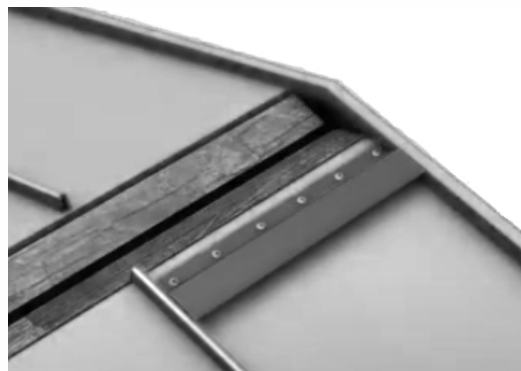
1. Stop panels 2" from center line of ridge for vented ridge installation.
2. Apply Butyl to flat part of panel
3. Notch Z-flashing to fit over the top of the rib or cut pieces to fit in-between ribs.
4. Install z-flashing on top of Butyl and fasten to panel using 1" pancake screws every 6".
5. Use Titebond® to seal openings created between z-flashing and panel ribs
6. Slide ridge cap over z flashing on both sides and secure using rivets every 12".



Vented Installation

## Vented Installation

1. Apply Butyl below the predrill holes in the profile vent clip.
2. Use one clip located in the center of every panel.
3. Install one pancake screw through the large access hole in the top of the anchor clip on the down-slope side.
4. Slip the Flex-O-Vent underneath the profile vent clip.
5. Insert another pancake screw in the up-slope hole.
6. Attach the ridge cap to Flex-O-Vent clip with rivets. (Make sure to not install rivet through the large access hole in the profile vent clip)



Snap Z Ventilation System

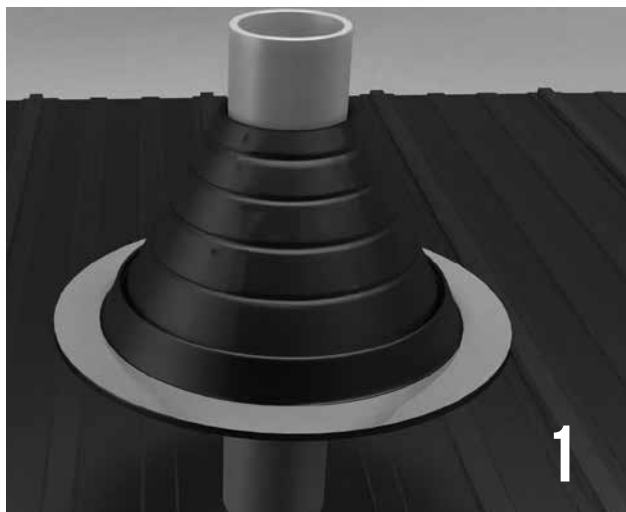
## Snap Z Ventilation Installation

1. Take the Snap-Z and a screw gun and install one on each side of the ridge of the roof. Allow about 1/8" to 1/16" slack for ridge capping. Install using screws spaced every 3 inches. (Butyl tape must be installed on the bottom side of the Snap-Z prior to installing.)
2. Next take the ridge capping and slide it onto the Snap-Z. Then fasten ridge capping to Snap-Z with stainless steel rivets. Installation instructions for vented Snap-Z can be found at [www.standingseamroofvent.com](http://www.standingseamroofvent.com). Do not install Snap-Z on any vented closure roof less than 3/12 pitch. Apply sealant at the joint of panel rib and Snap-Z. The screw used to fasten the Snap-Z must penetrate through the decking by 1/2"



*Make Your Next Roof Your Last!*

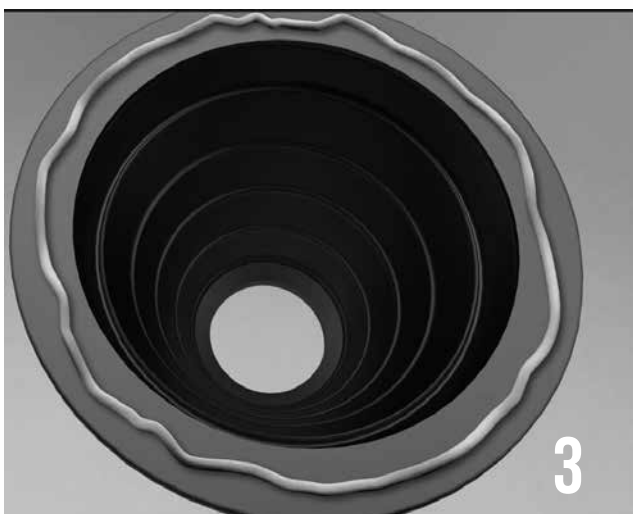
# ROOF BOOT INSTALLATION



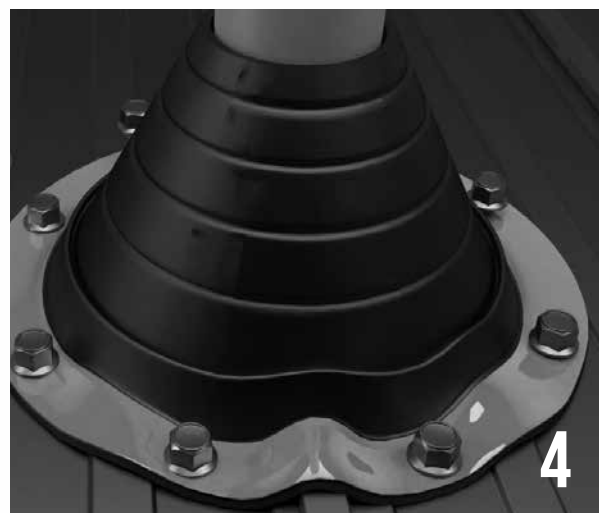
Choose appropriate Master Flash with opening at least 20% smaller than pipe diameter. If necessary trim opening to 20% smaller than pipe diameter.



Slide Master Flash down over pipe.  
(A nonpetroleum base lubricant will ease installation.)



Apply sealant between base and roof.



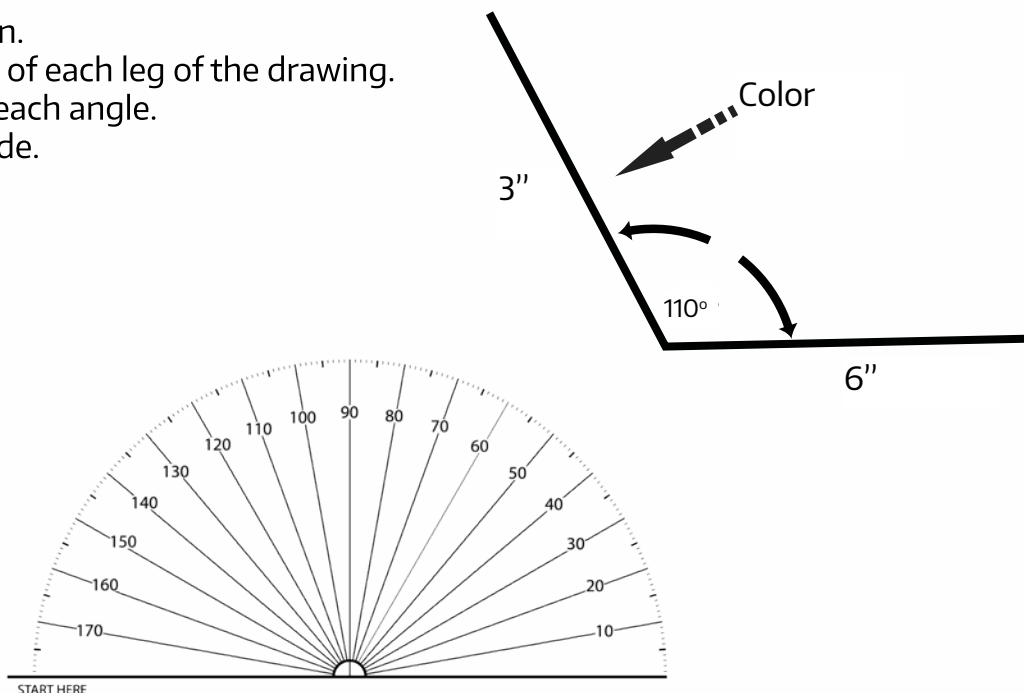
Use fasteners to complete sealing. Space screws no more than 2 1/2" apart around the pipe.

# SPECIAL TRIM INFORMATION

Tri County Metals can manufacture special trim designs separate from those designs included in the manual.

If your project requires special trim, please provide us with the following information:

1. A drawing of the trim design.
2. Clearly marked dimensions of each leg of the drawing.
3. Clearly marked degrees of each angle.
4. Clearly indicate the color side.



## TRIM MANUFACTURING SPECIFICATIONS

- > Hem size must be 1/2" or larger.
- > Bends on hemmed legs need to be greater than 1/2" or else the hem obstructs the break.
- > Smashed parts need to be at least 1 1/4".
- > Maximum bend break can do is 135 degrees.
- > When bending angles opposite of one another, like that of a Z Flashing, the middle part of the Z must be at least 1/2" or larger.
- > When bending two 90 degree bends on the same side, one leg has to be equal to or less than the length of the material between the two bends.
- > Pieces with more than two bends on the same side are difficult to do unless the bends are large enough. Please talk with a Tri County Metals representative for assistance.
- > For trim pieces that have to slide over another piece where the inside dimensions are critical, please indicate "CRITICAL" measurement.



*Make Your Next Roof Your Last!*



# CARE AND MAINTENANCE

To maintain the original finish of the metal roofing panels, the only regular maintenance necessary is that of annual washing. Mild solutions of biodegradable cleaner or household ammonia will aid in the removal of most dirt, and the following are recommended levels:

- 1) One cup of Simple Green®, or other non-toxic biodegradable cleaner, which contain less than 0.5% phosphate, dissolved into two gallons of warm water.

**NOTE:** The use of detergents containing greater than 0.5% phosphate is not recommended for use in general cleaning of building panels. NEVER BLEND CLEANSERS OR DETERGENTS WITH BLEACH.

- 2.) One cup of household ammonia dissolved into five gallons of water (room temperature). Working from the bottom to the top of the metal roofing panels, the panels may be washed with either solution. The use of a well soaked cloth, sponge, brush (with very soft bristles), or a low pressure spray washer is advised.

We do not recommend the use of scouring powders or industrial solvents, since these agents may damage the film. Solvent containing cleaners such as Fantastic®, however, are very effective and can be used without concern. If mildew or other fungal growth is a problem and cannot be removed as outlined above, household bleach, mixed at a concentration of one cup of bleach to five gallons of water, along with one cup of a mild soap (e.g., Ivory) to aid wetting, is recommended.

Once the metal roofing panels is washed, thorough rinsing with clear water is necessary to eliminate the possibility of residue. Failure to remove all residues from these cleaning steps may damage the film.

**SHERWIN  
WILLIAMS®**  
**Coil Coatings**



*Make Your Next Roof Your Last!*

**RETURN POLICY:** All Tri County Metals trim is 30 day manufactured from either our Mill finish Galvalume® or TCM exclusive painted metal systems and is returnable as long as it is deemed by our Company's Production Manager as being in good, clean and resalable condition, free from scratches, mars and other damages. Tri County Metals reserves the right to charge a 20% restocking fee. The same general principle applies also to the return of other accessories such as screws, boots, closures, etc.

Trim that is custom made (different than the stated specifications in this manual, including L Flashing and Fascia are not returnable, and is considered the property of the customer once it has been made, whether paid for or not. This Policy also pertains to metal roofing and siding panels, which cannot be returned.

**PAYMENT:** Tri County Metals accepts cash, check, Visa, MasterCard, Discover Card and America Express. Personal checks require the check writers drivers license # and date of birth.

Returned checks will be assessed a \$35 dollar return check fee.

**DELIVERY POLICY:** Delivery charges apply to all orders where delivery is requested. Please call for details.

**SALES TAX:** All orders picked up at Tri County Metals, and all orders delivered within the State of Florida, are subject to State Sales Tax. Tax Exemptions should be verified prior to delivery or customer pick up. Orders delivered out of state are tax exempt.

**WARRANTED PRODUCTS:** Request written warranty for details.

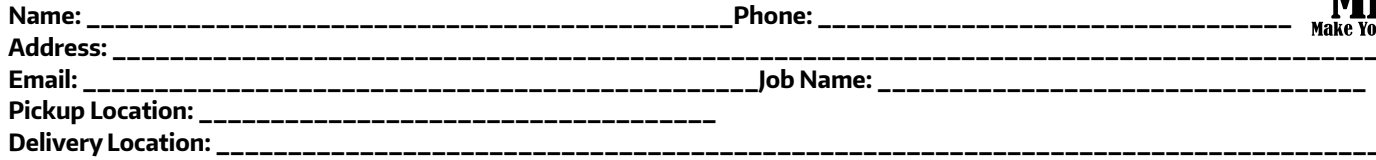
**INDEMNITY:** All prices and designs are subject to change without notice.

**DISCLAIMER:** While we have made every attempt at accuracy in this manual, we are not responsible for typographic, printing or technical errors.

The success of Tri County Metals has been, and will continue to be, because of our valued customers. We strive to be a company where contractors as well as home owners are welcome. We will assist you in calculating the materials needed to complete your project and at a price you can afford. We understand that our customer's time is important and we make every effort to get you in and out as quickly and efficiently as possible. Quality, price, service and availability are the mainstays of our business and we don't plan on changing it.



*Make Your Next Roof Your Last!*

☐ Order

<input type="checkbox"/> 5V Gauge: _____ Color: _____	<input type="checkbox"/> Ultra-Rib Gauge: _____ Color: _____	<input type="checkbox"/> PBR Gauge: _____ Color: _____
<input type="checkbox"/> TCM-Lok _____ Gauge: _____ Color: _____	<input type="checkbox"/> SL-Lok Gauge: _____ Color: _____	<input type="checkbox"/> MS-Lok Gauge: _____ Color: _____

[illegible]

INSULATION/VENTILATION	QTY
TCM Radiant Barrier	
TCM Radiant Tape	
FlexPro	
Snap Z	

SEALANTS	QTY
Peel and Seal	
TCM Sealant	
Expanding Foam	
Butyl	
Inside Closures	
Outside Closures	

UNDERLAYMENTS/PURLINS	QTY
Ultra HT Wind & Water	
Synthetic HT Underlayment	
1 x 4 x 12 SYP	

TRIM	QTY
Drip Edge	
Ridge Cap	
Flat Ridge Cap	
Hip Cap	
Gable Rake	
W-Valley	
Sidewall	
Endwall	
Flat Endwall	
Transition Flashing	
Chimney Flashing	
Panel Starter	
Z-Flashing	
Eave Cleat	

FASTENERS	Woodgrip Screw QTY	Wood Binder QTY	WoodZac QTY	Woodgrip XG QTY
1"				
1 1/2"				
2"				
Pancakes				
Tek Screws				
Lap Screws				

FASTENERS	QTY	
Stainless Rivets		
Painted Rivets		
Purlin Screws #9 x 3"		
Collated Nails		
Stick Nails		
Trim Nails 1-1/4"		
Felt Nails 1 1/4"		
Stinger Nails		

[illegible]

Specialty Trim 2  
(attach drawing or draw in box)

QTY: \_\_\_\_ Ga: \_\_\_\_ Color: \_\_\_\_\_ Stretched Out: \_\_\_\_

QTY: \_\_\_\_ Ga: \_\_\_\_ Color: \_\_\_\_\_ Stretched Out: \_\_\_\_